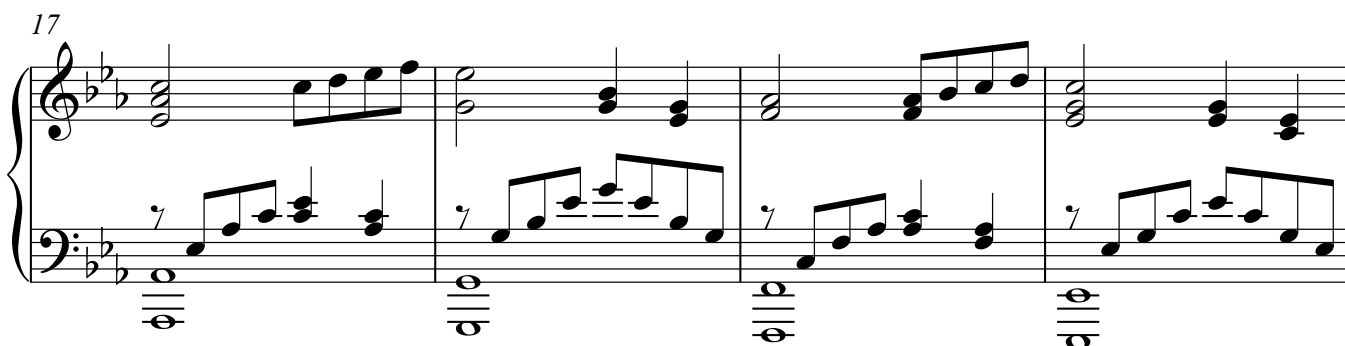
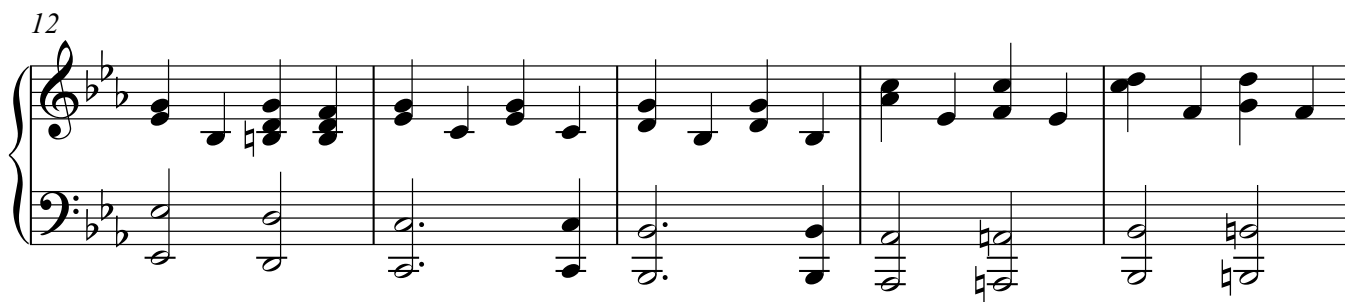
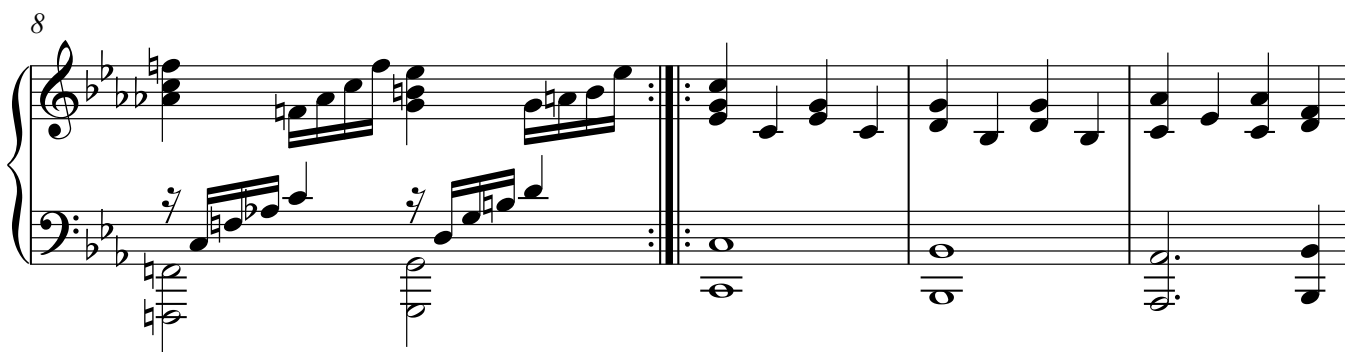
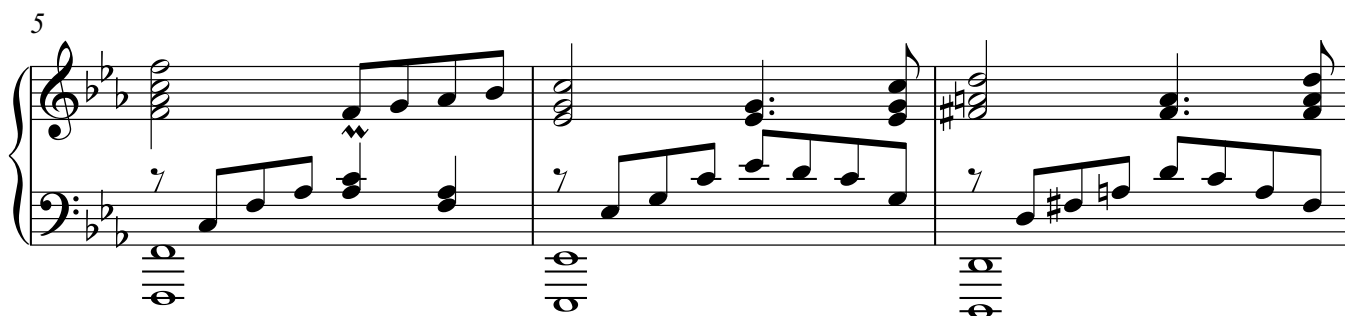
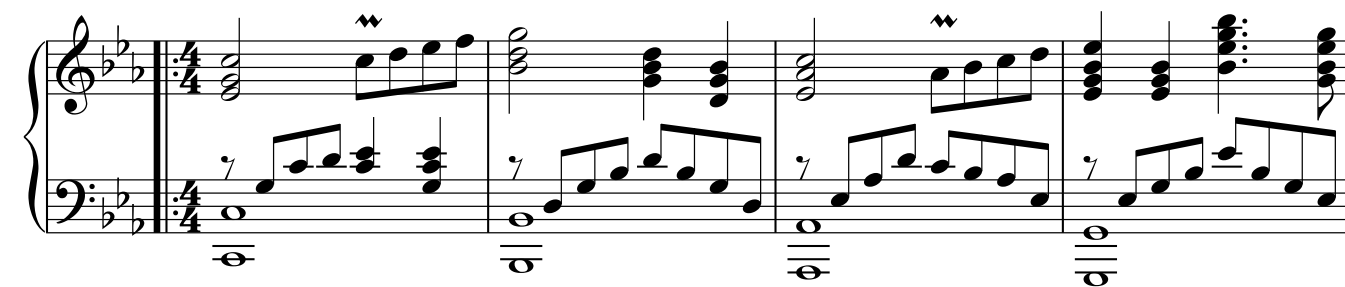


Piano

Сошел на Землю

И. Крышко

С. Воробьев



21

Measures 21-24 of a piano piece. The key signature has two flats (B-flat and E-flat). The music is in 4/4 time. Measures 21 and 23 feature a treble clef staff with chords and eighth-note patterns, while measures 22 and 24 have a treble clef staff with whole notes. The bass clef staff consistently features eighth-note patterns across all measures. Measure 23 includes a key signature change to one flat (F major) for the final two measures.

25

Measures 25-28 of a piano piece. The key signature has one flat (F major). The music is in 4/4 time. Measures 25 and 27 feature a treble clef staff with chords and eighth-note patterns, while measures 26 and 28 have a treble clef staff with whole notes. The bass clef staff consistently features eighth-note patterns across all measures.

29

Measures 29-31 of a piano piece. The key signature has one flat (F major). The music is in 4/4 time. Measures 29 and 31 feature a treble clef staff with chords and eighth-note patterns, while measure 30 has a treble clef staff with whole notes. The bass clef staff consistently features eighth-note patterns across all measures. Measure 31 includes a key signature change to two flats (B-flat and E-flat) for the final measure.

32

1.

Measures 32-35 of a piano piece. The key signature has two flats (B-flat and E-flat). The music is in 4/4 time. Measures 32 and 34 feature a treble clef staff with chords and eighth-note patterns, while measures 33 and 35 have a treble clef staff with whole notes. The bass clef staff consistently features eighth-note patterns across all measures. A first ending bracket spans measures 32-35.

36

2.

Measures 36-39 of a piano piece. The key signature has two flats (B-flat and E-flat). The music is in 4/4 time. Measures 36 and 38 feature a treble clef staff with chords and eighth-note patterns, while measures 37 and 39 have a treble clef staff with whole notes. The bass clef staff consistently features eighth-note patterns across all measures. A second ending bracket spans measures 36-39.

40

Measures 40-43 of a piano piece. The key signature has two flats (B-flat and E-flat). The music is in 4/4 time. Measures 40 and 41 feature a complex texture with multiple chords and moving lines in both hands. Measures 42 and 43 show a continuation of this texture with some simplification. The bass line is particularly active with eighth and sixteenth notes.

44

Measures 44-46. Measure 44 continues the complex texture. Measure 45 shows a more active bass line with sixteenth notes. Measure 46 features a more open texture with sustained chords in the right hand and a moving bass line.

47

Measures 47-50. Measures 47 and 48 show a continuation of the complex texture. Measures 49 and 50 feature a more open texture with sustained chords in the right hand and a moving bass line.

51

Measures 51-52. Measure 51 features a more open texture with sustained chords in the right hand and a moving bass line. Measure 52 shows a continuation of this texture with some simplification.

53

Measures 53-55. Measure 53 features a more open texture with sustained chords in the right hand and a moving bass line. Measure 54 shows a continuation of this texture with some simplification. Measure 55 features a more open texture with sustained chords in the right hand and a moving bass line.